

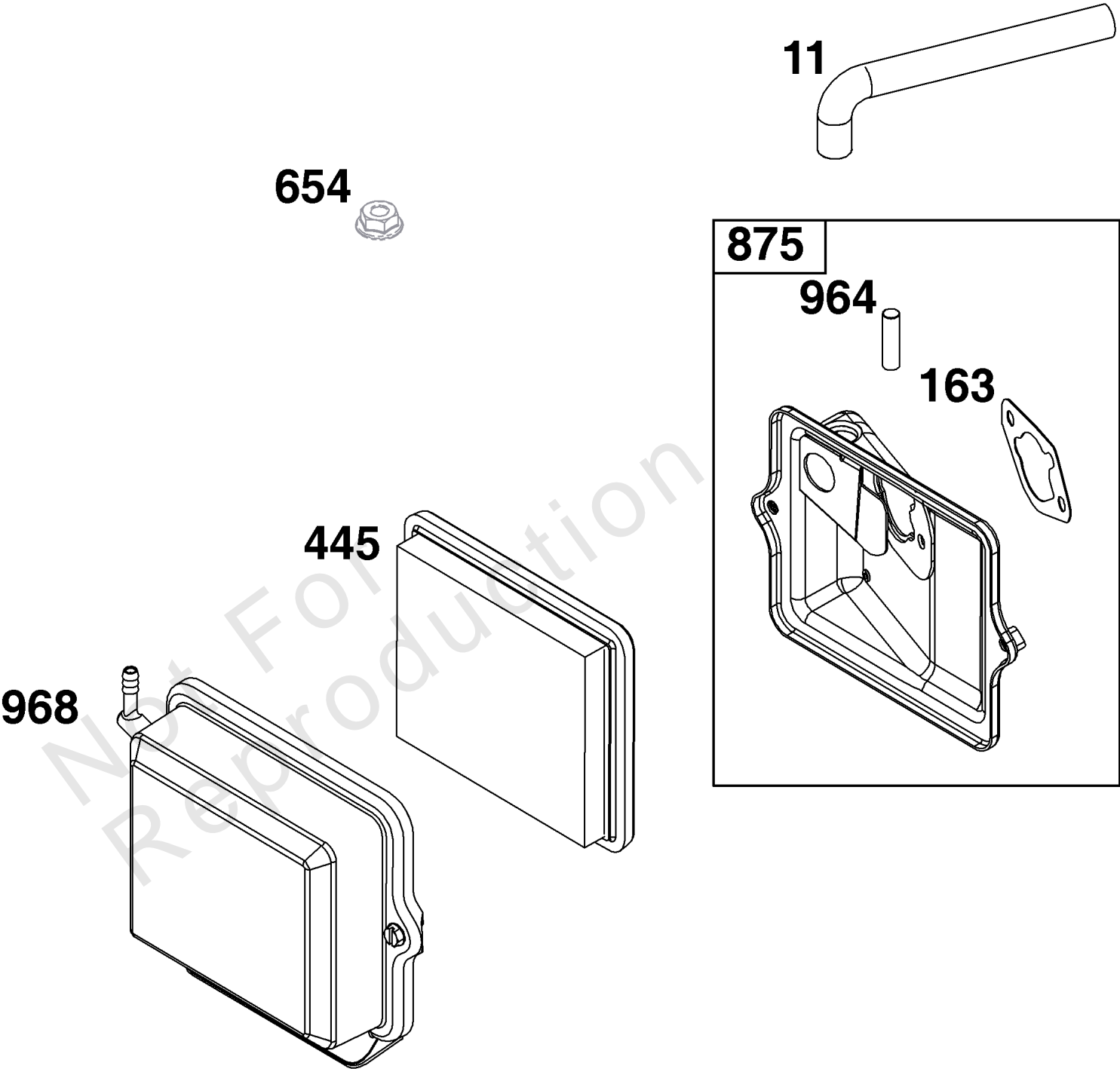


Parts Manual

Mfg. No: 25T235-0110-G1

Model Components	Page
Air Cleaner Group.	4
Blower Housing Group.	6
Carburetor and Fuel Supply Group.	8
Controls Group.	10
Crankcase Cover/Sump and Lubrication Group.	12
Crankshaft Group.	14
Cylinder Group.	16
Cylinder Head Group.	18
Flywheel, Ignition, and Starter Group.	20
Replacement Engine - US & Canada.	22

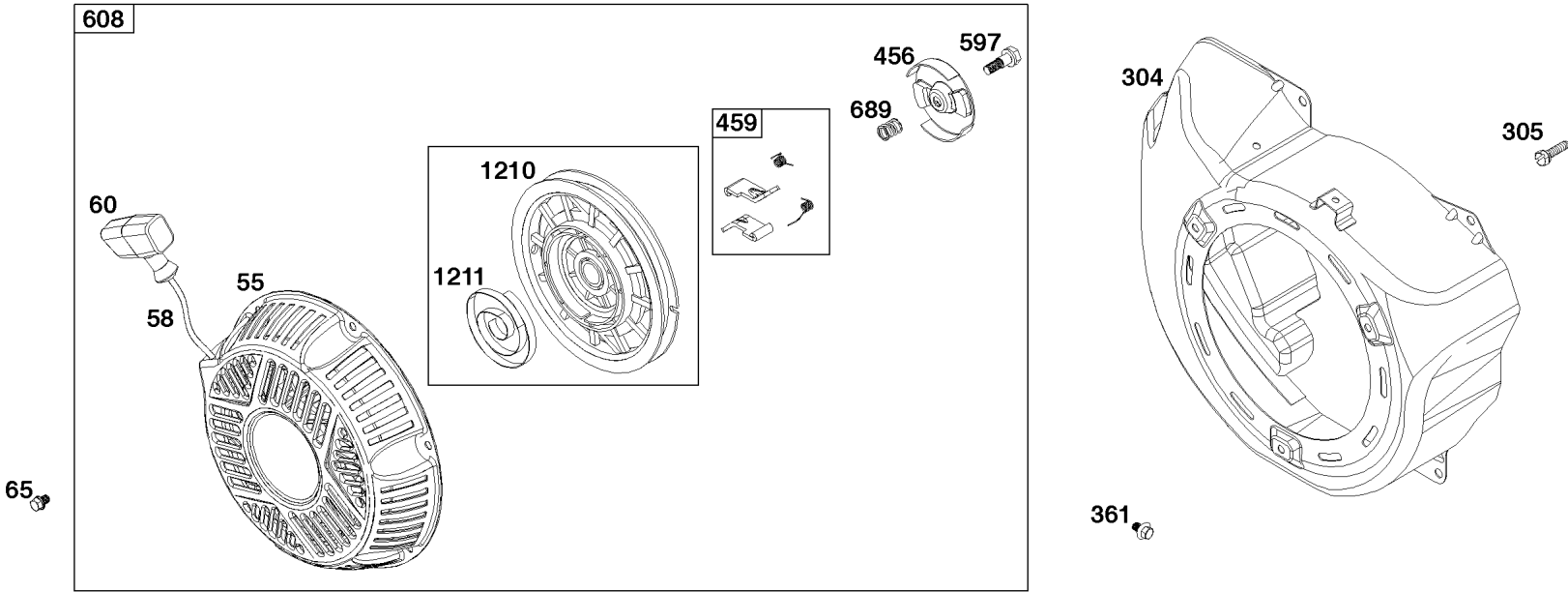
Not For
Reproduction



Air Cleaner Group

REF NO	PART NO	QTY	DESCRIPTION
11	797768	1	TUBE, Breather
163	-----	1	BOOT, Spark Plug -(Part information located in Carburetor and Fuel Supply Group.)
445	491588S	1	FILTER, A/C Cartridge
654	-----	2	NUT -(Part information located in Carburetor and Fuel Supply Group.)
875	799776	1	BASE, Air Cleaner
964	799159	1	CAP, Connector
968	590958	1	COVER, Air Cleaner

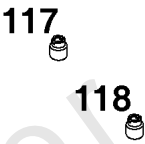
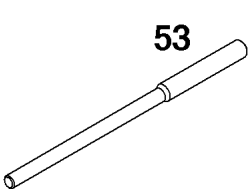
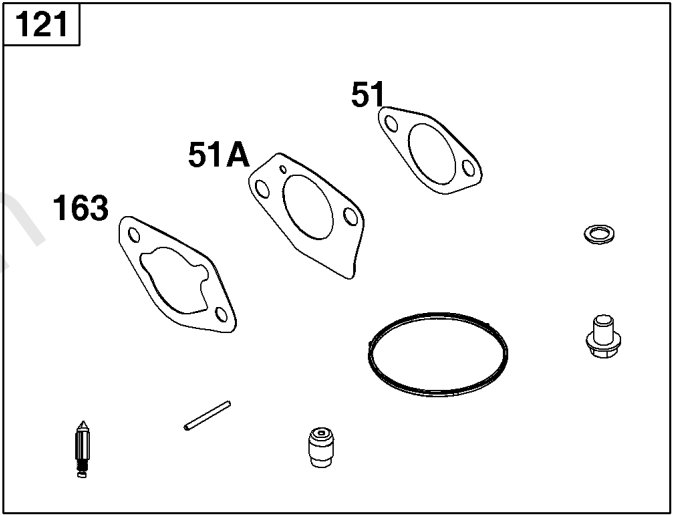
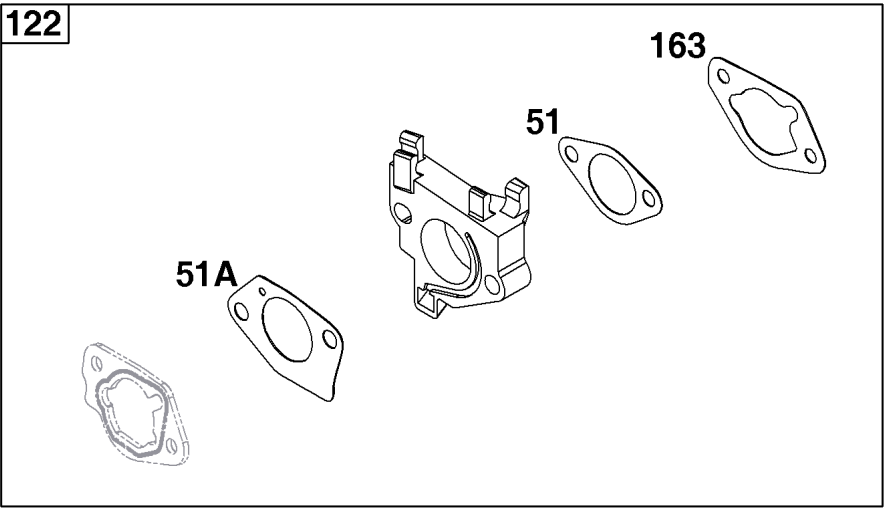
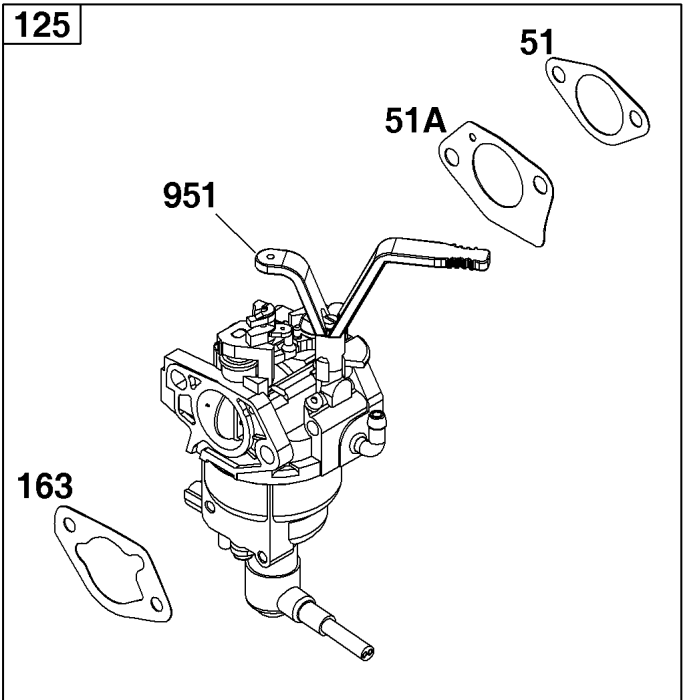
Not For Reproduction



1319 1319A
1036

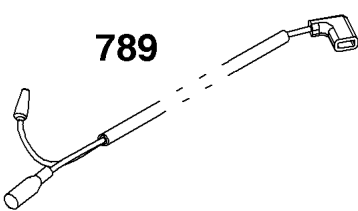
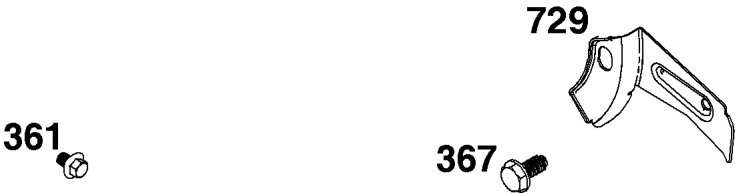
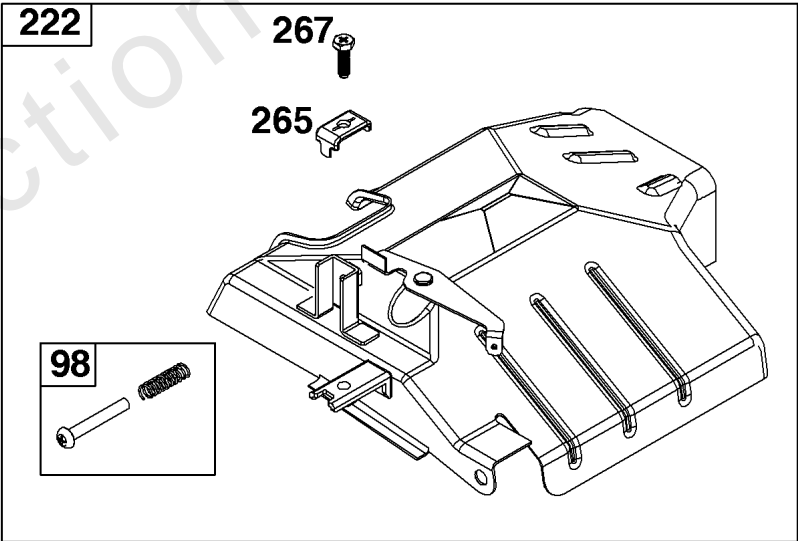
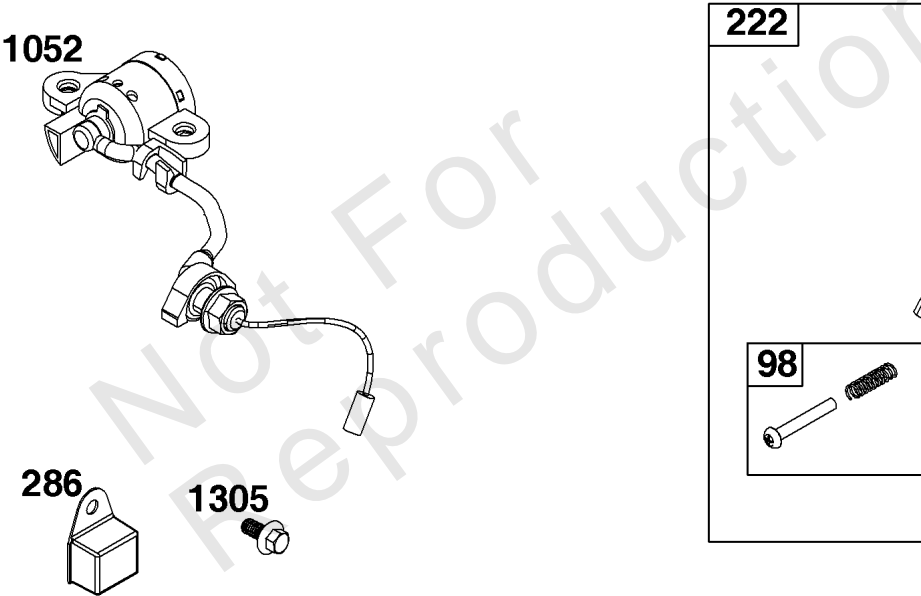
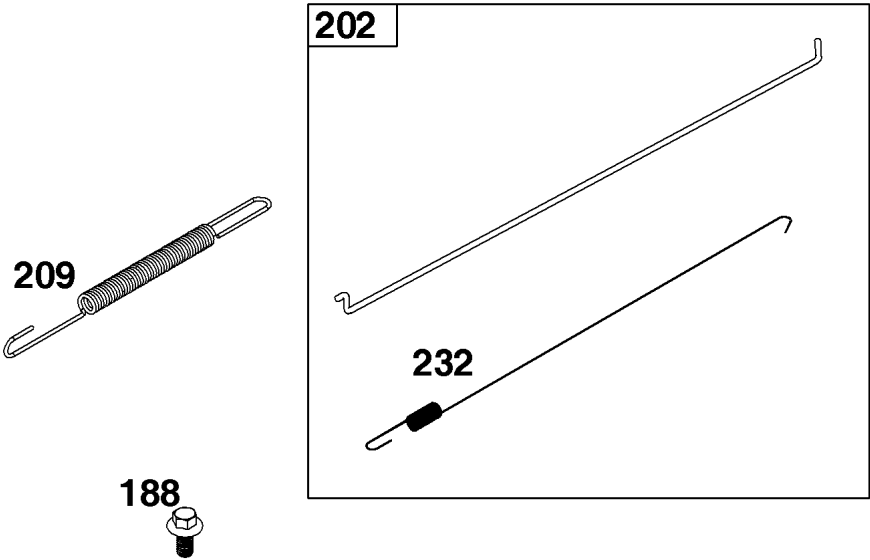
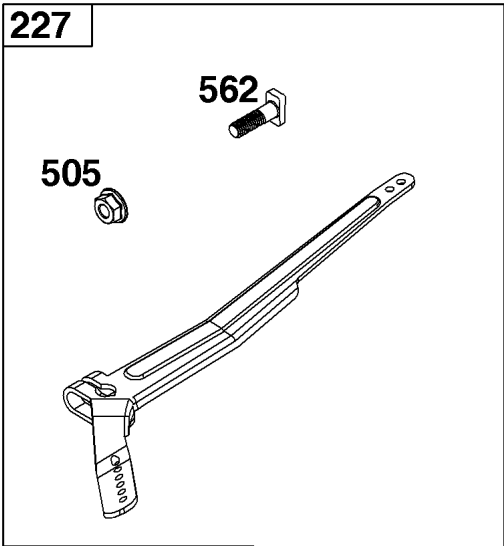
Blower Housing Group

REF NO	PART NO	QTY	DESCRIPTION
55	-----		HOUSING, Rewind Starter -(Part information located in Flywheel/Ignition/Starter Group.)
58	-----		ROPE, Starter -(Part information located in Flywheel/Ignition/Starter Group.)
60	-----		GRIP, Starter Rope -(Part information located in Flywheel/Ignition/Starter Group.)
65	-----		SCREW -(Part information located in Flywheel/Ignition/Starter Group.)
304	799968	1	HOUSING, Blower
305	798618	5	SCREW -(Blower Housing)
361	-----		SCREW -(Part information located in Controls Group.)
456	-----		PLATE, Pawl Friction -(Part information located in Flywheel/Ignition/Starter Group.)
459	-----		PAWL, Ratchet -(Part information located in Flywheel/Ignition/Starter Group.)
597	-----		SCREW -(Part information located in Flywheel/Ignition/Starter Group.)
608	-----		STARTER, Rewind -(Part information located in Flywheel/Ignition/Starter Group.)
689	-----		SPRING, Friction -(Part information located in Flywheel/Ignition/Starter Group.)
1036	-----		LABEL, Emissions -(Available from a Briggs & Stratton Authorized Dealer)
1210	-----		PULLEY/SPRING ASSEMBLY -(Part information located in Flywheel/Ignition/Starter Group.)
1211	-----		PULLEY/SPRING ASSEMBLY -(Part information located in Flywheel/Ignition/Starter Group.)
1319	794467		LABEL, Warning -(REQUIRED When Replacing Parts With Warning Labels Affixed)
1319A	797669		LABEL, Warning -(REQUIRED When Replacing Parts With Warning Labels Affixed)



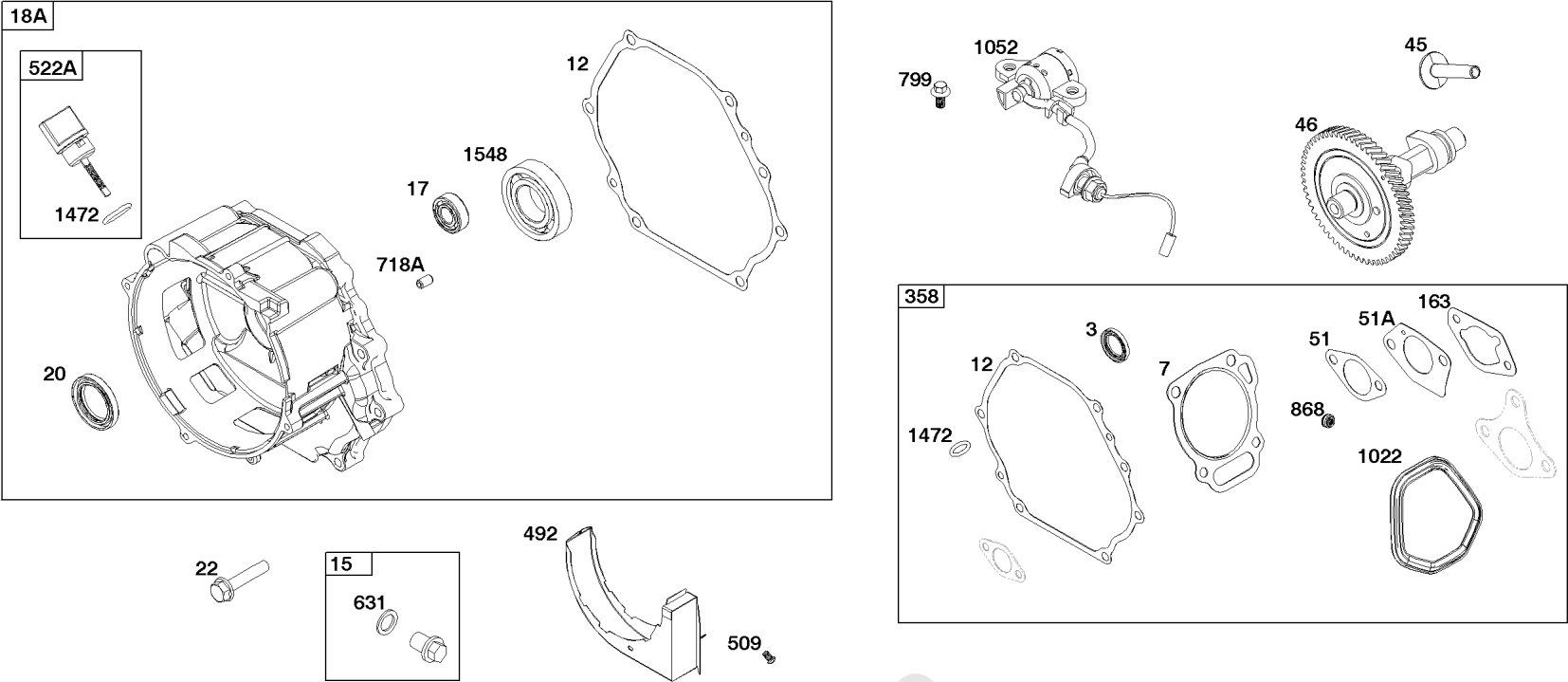
Carburetor and Fuel Supply Group

REF NO	PART NO	QTY	DESCRIPTION
51	-----		GASKET, Intake -(Part information located in Cylinder Head Group.)
51A	-----		GASKET, Intake -(Part information located in Cylinder Head Group.)
53	797757	2	STUD -(Carburetor)
117	799774	1	JET, Main -(Standard)
118	593503	1	JET, Main -(High Altitude)
121	799662		KIT, Carburetor Overhaul
122	799961	1	SPACER, Carburetor
125	799773	1	CARBURETOR
163	797756	1	GASKET, Air Cleaner
654	690939	2	NUT -(Carburetor)
951	797759	1	LEVER, Choke



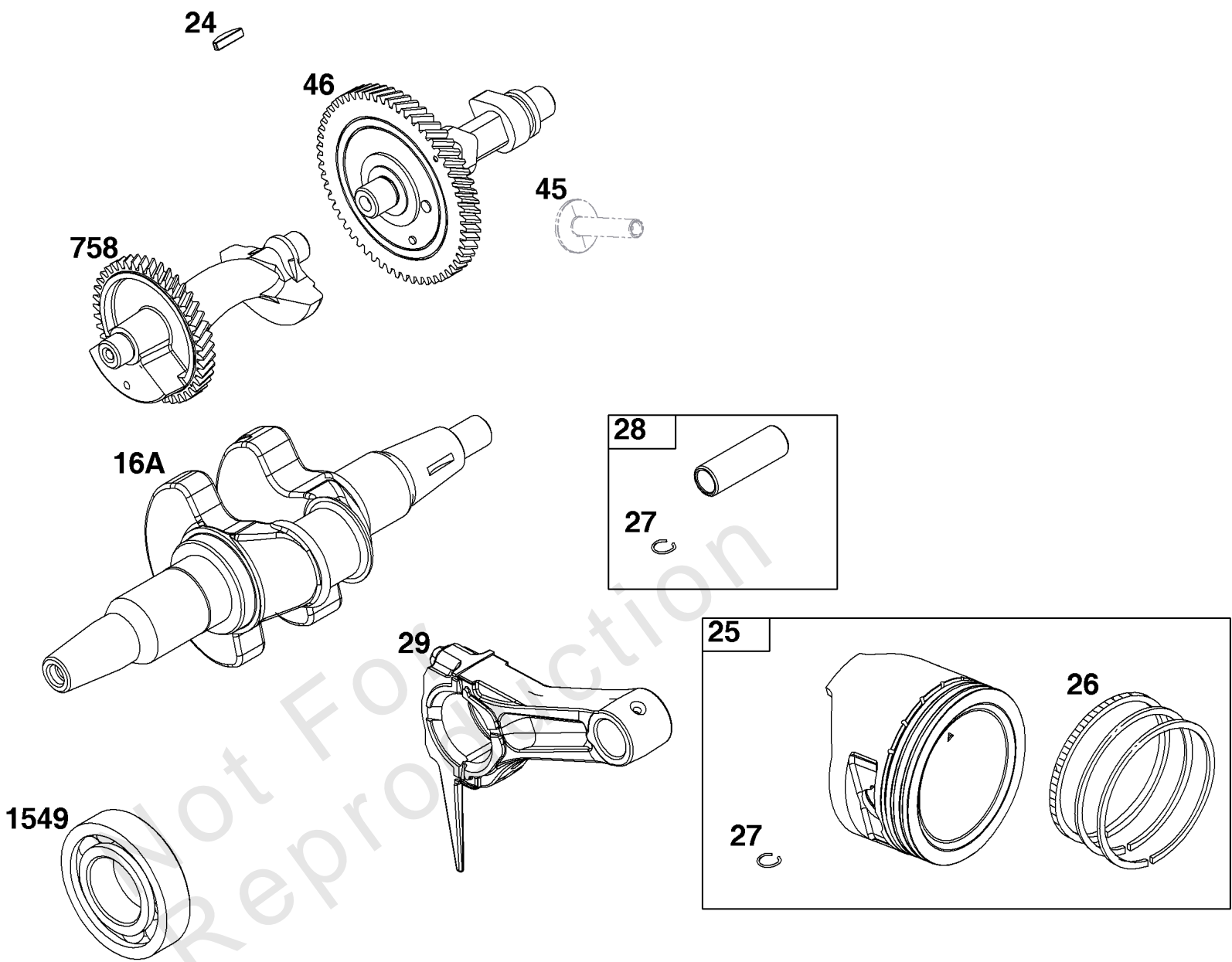
Controls Group

REF NO	PART NO	QTY	DESCRIPTION
98	592978	1	KIT, Idle Speed
188	798618	2	SCREW -(Control Bracket)
202	797810	1	LINK, Mechanical Governor
209	797843	1	SPRING, Governor
222	797751	1	BRACKET, Control
227	799924	1	LEVER, Governor Control
232	797809	1	SPRING, Governor Link
265	691024	1	CLAMP, Casing
267	699492	1	SCREW -(Casing Clamp)
286	797772	1	MODULE, Oil Sensor
361	798618	2	SCREW -(Starting Switch)
367	798618	2	SCREW -(Wire Clip)
505	690939	1	NUT -(Governor Control Lever)
562	797230	1	BOLT -(Governor Control Lever)
729	592311	1	CLIP, Wire
789	797856	1	HARNESS, Wiring
1052	-----		SENSOR, Oil -(Part information located in Crankcase Cover/Sump and Lubrication Group.)
1305	798618	1	SCREW -(Oil Sensor Module)



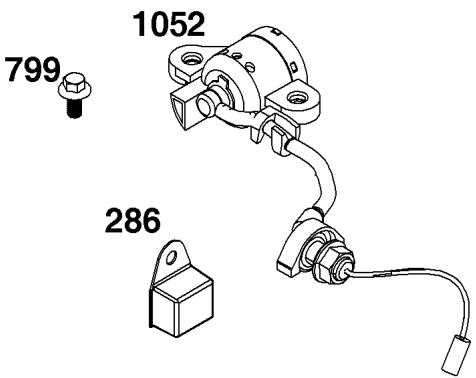
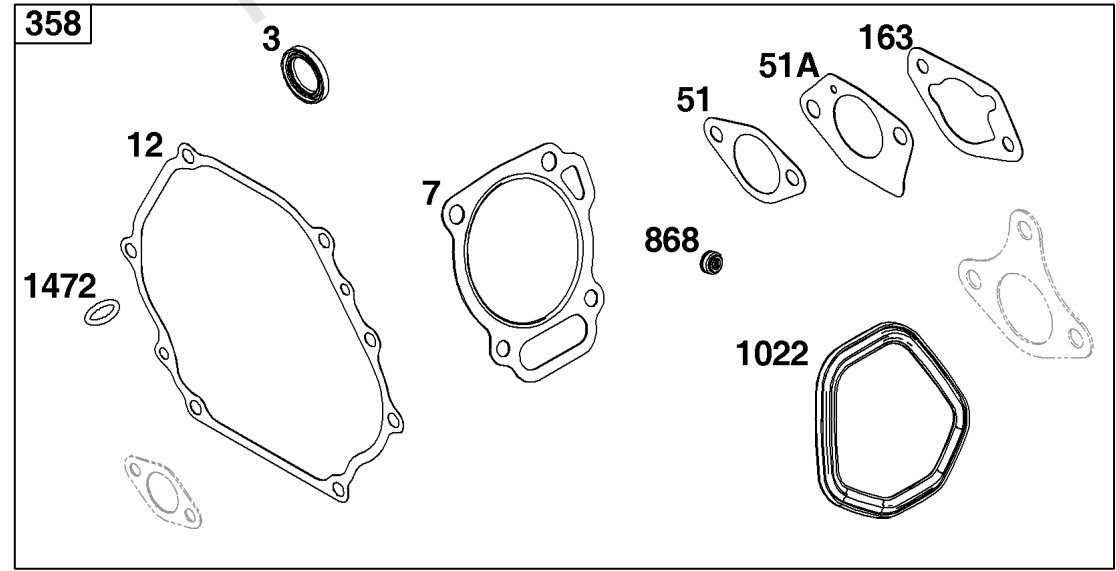
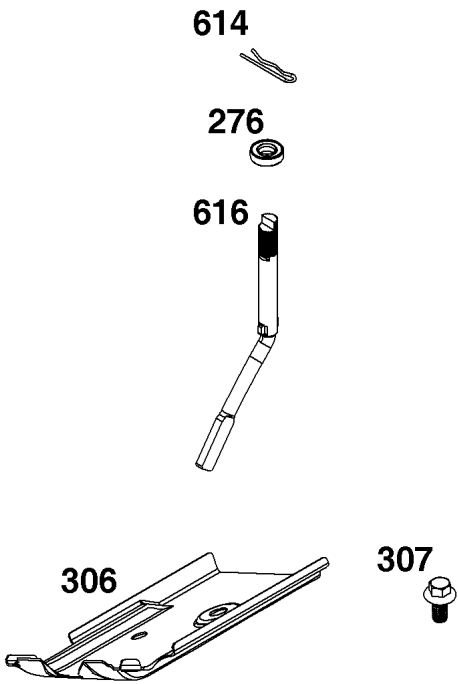
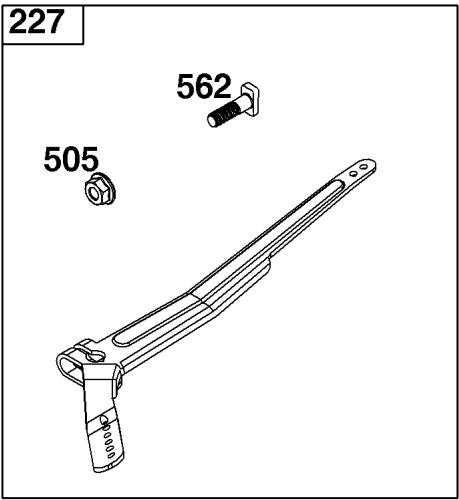
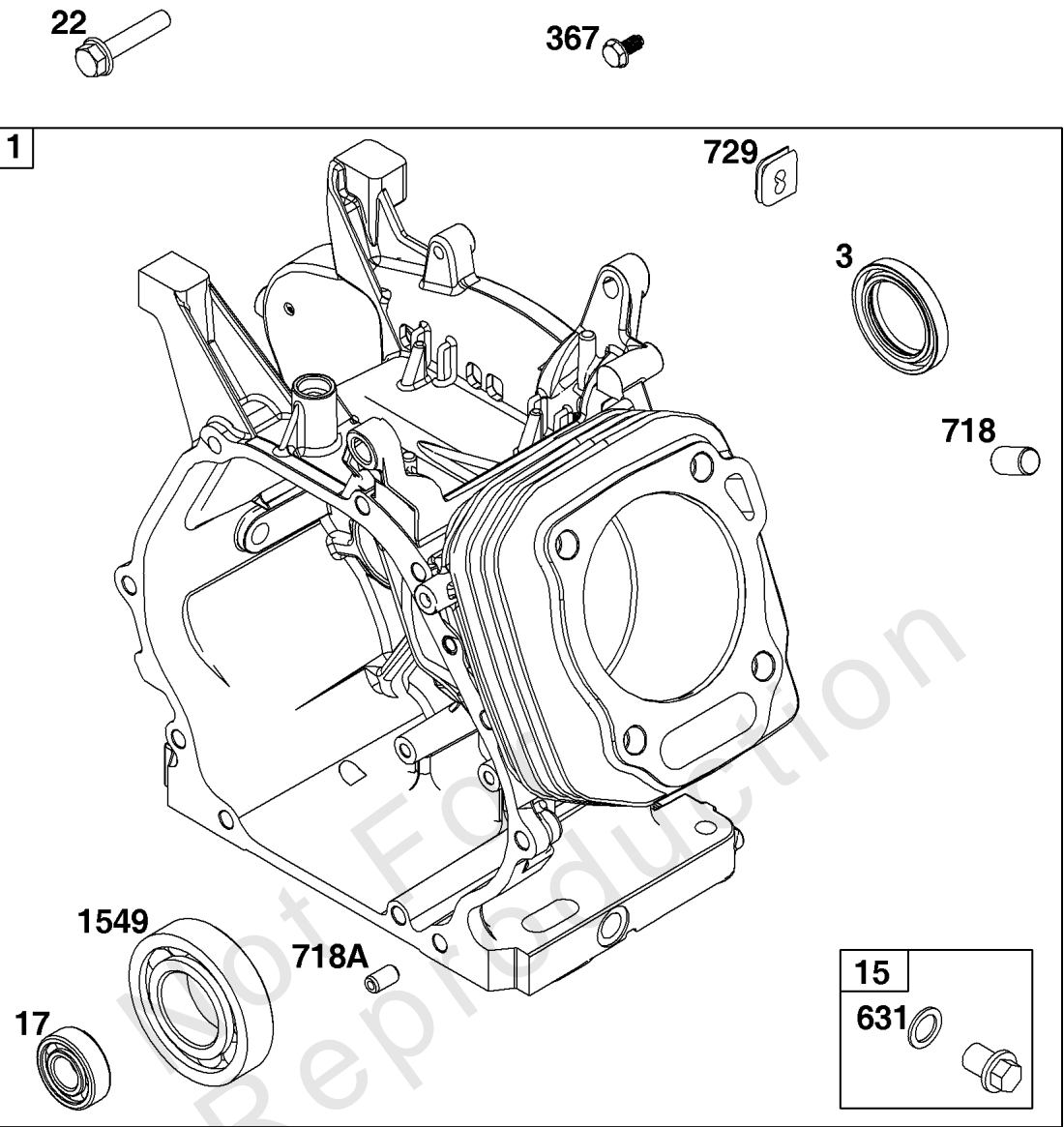
Crankcase Cover/Sump and Lubrication Group

REF NO	PART NO	QTY	DESCRIPTION
3	-----		SEAL, Oil -(Part information located in Cylinder Group.)
7	-----		GASKET, Cylinder Head -(Part information located in Cylinder Head Group.)
12	797789	1	GASKET, Crankcase
15	-----		PLUG, Oil Drain -(Part information located in Cylinder Group.)
17	-----		BEARING, Ball -(Part information located in Cylinder Group.)
18A	797760	1	COVER, Crankcase
20	797766	2	SEAL, Oil -(PTO Side)
22	797795	7	SCREW -(Crankcase Cover/Sump)
45	-----		TAPPET, Valve -(Part information located in Cylinder Head Group.)
46	-----		CAMSHAFT -(Part information located in Crankshaft Group.)
51	-----		GASKET, Intake -(Part information located in Cylinder Head Group.)
51A	-----		GASKET, Intake -(Part information located in Cylinder Head Group.)
163	-----	1	GASKET, Air Cleaner -(Part information located in Carburetor Group.)
358	-----		GASKET SET, Engine -(Part information located in Service Parts and Tools Group.)
492	798839	1	SHIELD, Crankcase
509	798840	3	SCREW -(Crankcase Shield)
522A	797762	1	PLUG, Dipstick/Fill
631	-----		WASHER -(Part information located in Cylinder Group.)
718A	-----		PIN, Locating -(Part information located in Cylinder Group.)
799	798975	2	SCREW -(Oil Sensor)
868	-----		SEAL, Valve -(Part information located in Cylinder Head Group.)
1022	-----		GASKET, Rocker Cover -(Part information located in Cylinder Head Group.)
1052	797771	1	SENSOR, Oil
1472	797763	1	SEAL, O-Ring -(Dipstick/Fill Plug)
1548	797765	1	BEARING, Ball -(Crankcase Cover/Sump)



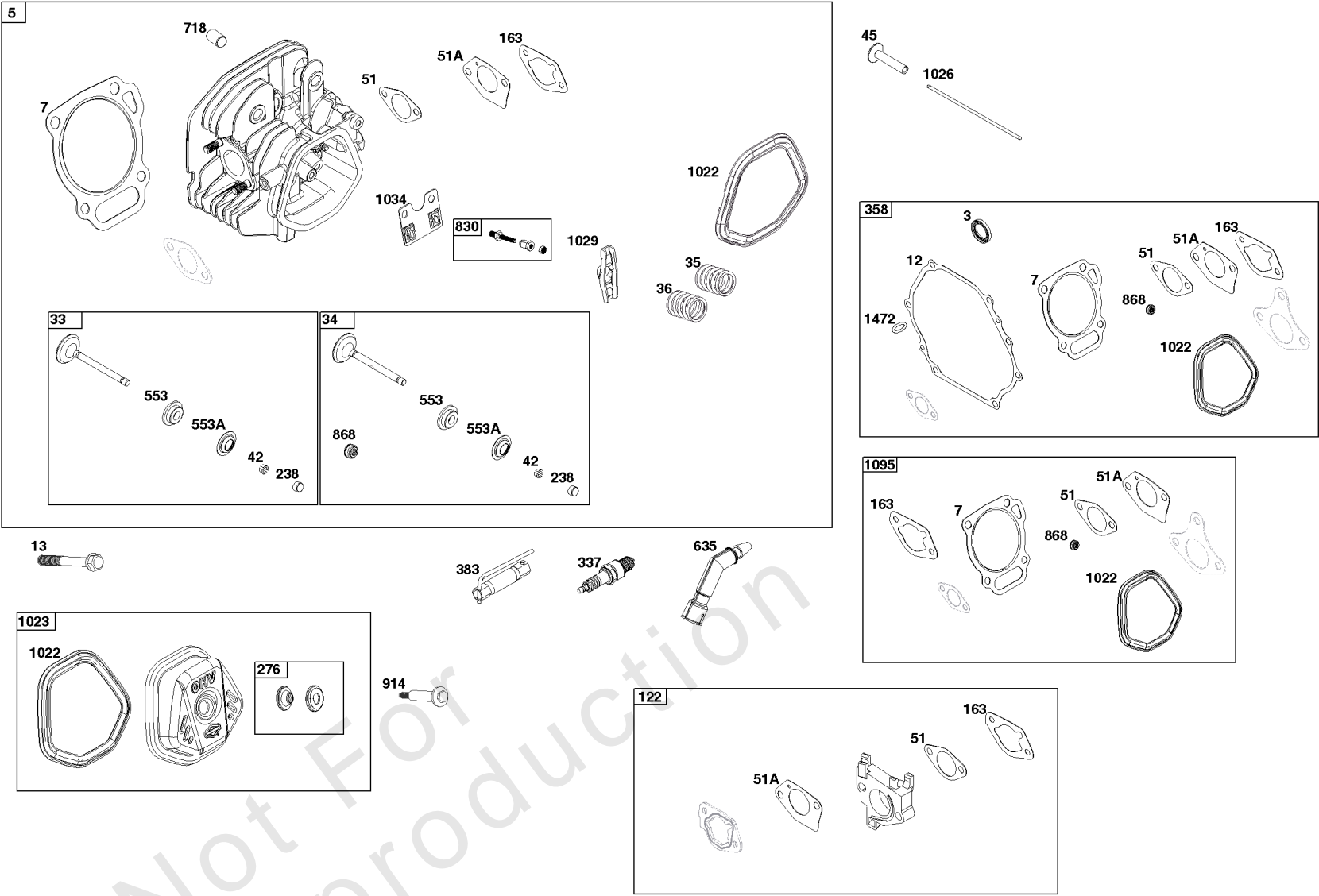
Crankshaft Group

REF NO	PART NO	QTY	DESCRIPTION
16A	797844	1	CRANKSHAFT
24	797286	1	KEY, Flywheel
25	799535	1	PISTON ASSEMBLY -(Standard)
25	799536	1	PISTON ASSEMBLY -(.010 Oversize)
25	799537	1	PISTON ASSEMBLY -(.020 Oversize)
26	799538	1	SET, Ring -(Standard)
26	799539	1	SET, Ring -(.010 Oversize)
26	799540	1	SET, Ring -(.020 Oversize)
27	797803	2	LOCK, Piston Pin
28	797799	1	PIN, Piston
29	797804	1	ROD, Connecting
45	-----		TAPPET, Valve -(Part information located in Cylinder Head Group.)
46	797851	1	CAMSHAFT
758	797852	1	COUNTERWEIGHT
1549	797765	1	BEARING, Ball -(Crankshaft)



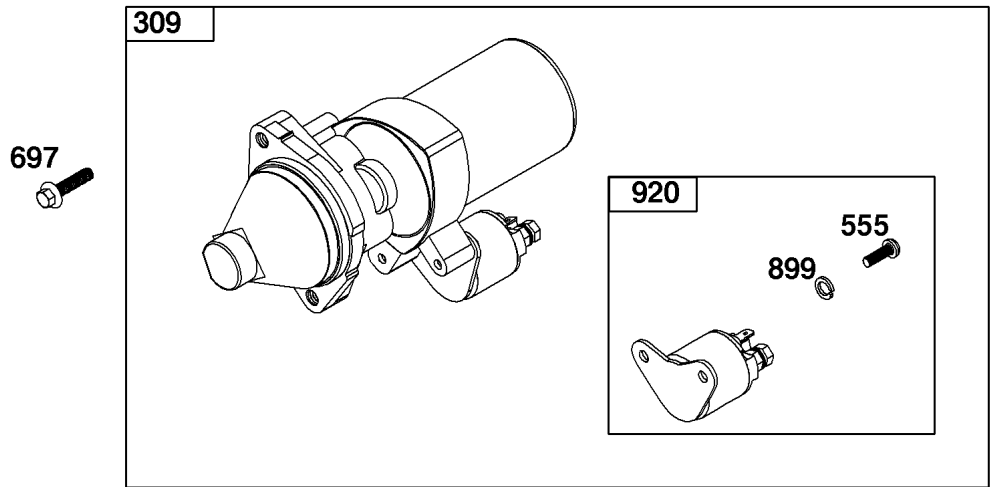
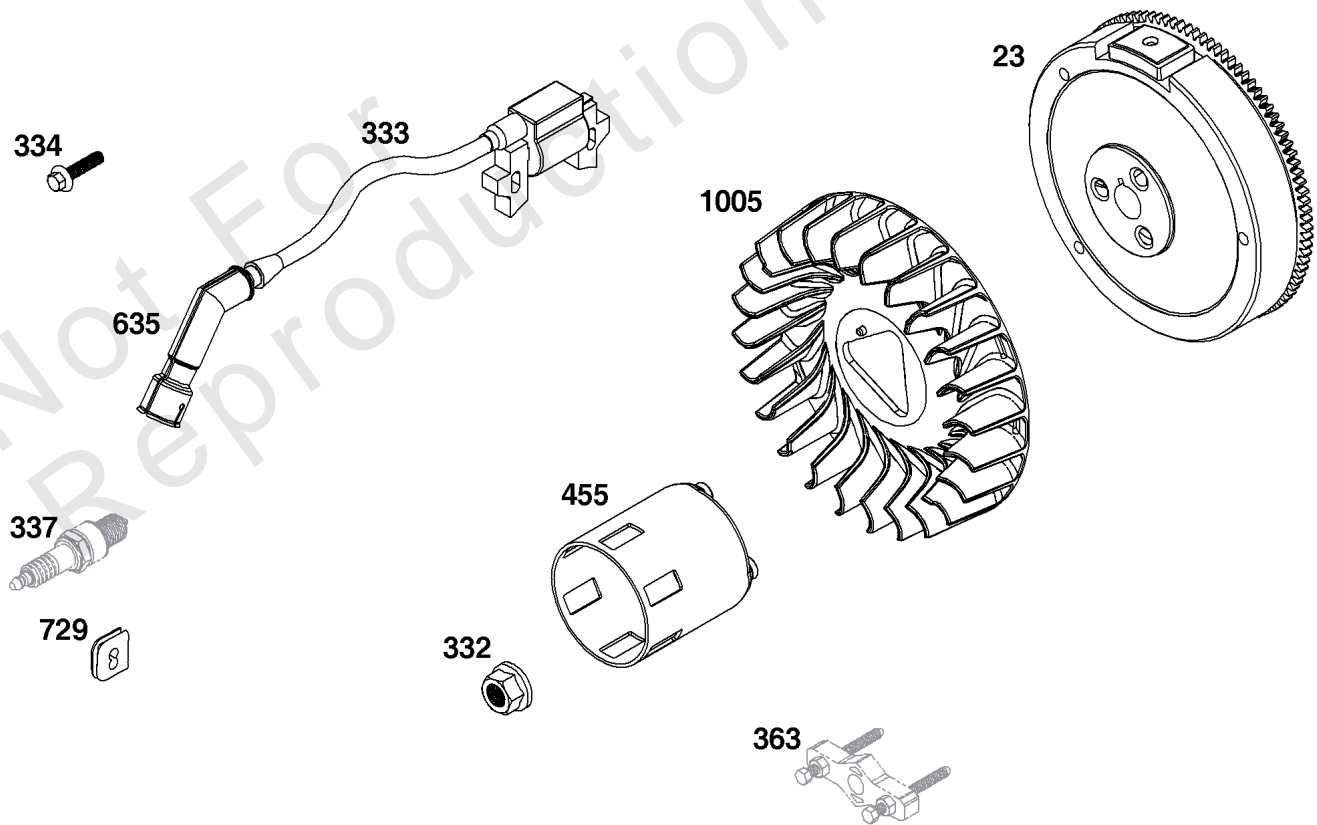
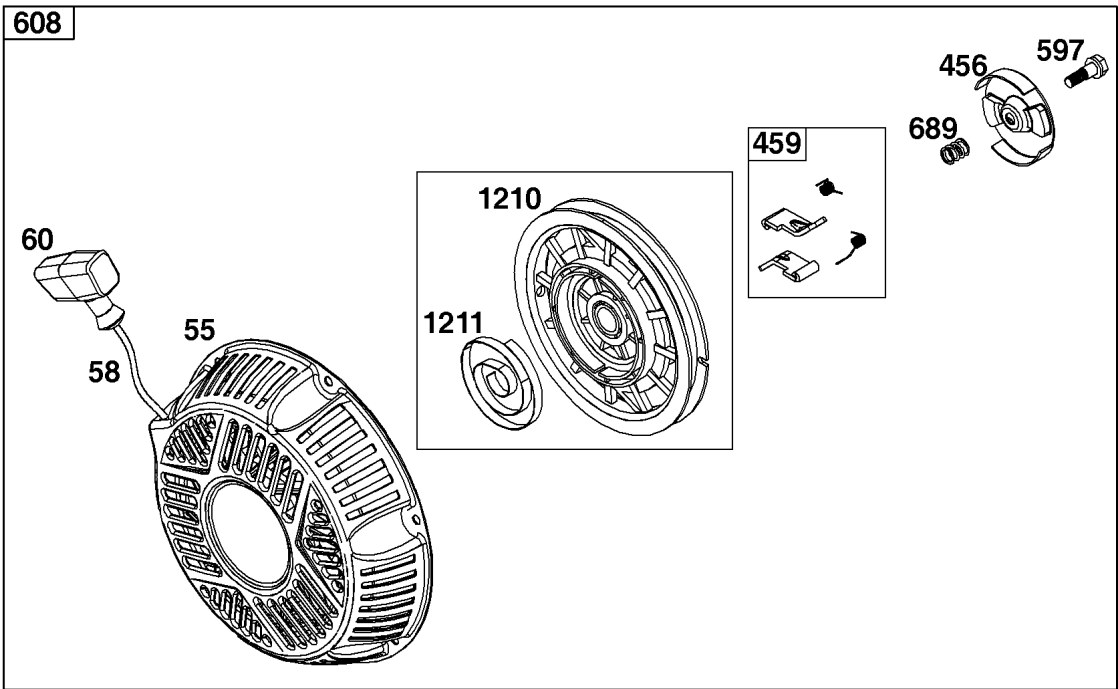
Cylinder Group

REF NO	PART NO	QTY	DESCRIPTION
1	799967	1	CYLINDER ASSEMBLY
3	797766	2	SEAL, Oil -(Magneto Side)
7	-----		GASKET, Cylinder Head -(Part information located in Cylinder Head Group.)
12	-----		GASKET, Crankcase -(Part information located in Crankcase Cover/Sump and Lubrication Group.)
15	797793	2	PLUG, Oil Drain
17	797764	2	BEARING, Ball -(Cylinder)
22	-----		SCREW -(Part information located in Crankcase Cover/Sump and Lubrication Group.)
51	-----		GASKET, Intake -(Part information located in Cylinder Head Group.)
51A	-----		GASKET, Intake -(Part information located in Cylinder Head Group.)
163	-----	1	GASKET, Air Cleaner -(Part information located in Carburetor Group.)
227	-----		LEVER, Governor Control -(Part information located in Controls Group.)
276	797806	1	WASHER, Sealing
286	-----		MODULE, Oil Sensor -(Part information located in Controls Group.)
306	797749	1	SHIELD, Cylinder
307	798618	1	SCREW -(Cylinder Shield)
358	799952		GASKET SET, Engine -(Service Kits may include extra parts not specific to this engine.)
367	-----	2	SCREW -(Part information located in Controls Group.)
505	-----		NUT -(Part information located in Controls Group.)
562	-----		BOLT -(Part information located in Controls Group.)
614	797229	1	PIN, Cotter
616	797805	1	CRANK, Governor
631	797794	2	WASHER -(Oil Drain Plug)
718	797792	2	PIN, Locating
718A	797761	2	PIN, Locating
729	-----		CLIP, Wire -(Part information located in Flywheel/Ignition/Starter Group.)
799	-----		SCREW -(Part information located in Crankcase Cover/Sump and Lubrication Group.)
868	-----		SEAL, Valve -(Part information located in Cylinder Head Group.)
1022	-----		GASKET, Rocker Cover -(Part information located in Cylinder Head Group.)
1052	-----		SENSOR, Oil -(Part information located in Crankcase Cover/Sump and Lubrication Group.)
1472	-----	1	SEAL, O-Ring -(Part information located in Crankcase Cover/Sump and Lubrication Group.)
1549	-----		BEARING, Ball -(Part information located in Crankshaft Group.)



Cylinder Head Group

REF NO	PART NO	QTY	DESCRIPTION
3	-----		SEAL, Oil -(Part information located in Cylinder Group.)
5	799533	1	HEAD, Cylinder
7	799534	1	GASKET, Cylinder Head
12	-----		GASKET, Crankcase -(Part information located in Crankcase Cover/Sump and Lubrication Group.)
13	797791	4	SCREW -(Cylinder Head)
33	797778	1	VALVE, Exhaust
34	797777	1	VALVE, Intake
35	797780	1	SPRING, Valve -(Intake)
36	797780	1	SPRING, Valve -(Exhaust)
42	797783	4	KEEPER, Valve
45	797786	2	TAPPET, Valve
51	797845	1	GASKET, Intake
51A	797755	1	GASKET, Intake
122	-----		SPACER, Carburetor -(Part information located in Carburetor and Fuel Supply Group.)
163	-----	1	GASKET, Air Cleaner -(Part information located in Carburetor and Fuel Supply Group.)
238	797784	2	CAP, Valve
276	590987	1	WASHER, Sealing
276	797847	1	WASHER, Sealing
337	798615	1	PLUG, Spark
358	-----		GASKET SET, Engine -(Part information located in Service Parts and Tools Group.)
383	-----		WRENCH, Spark Plug -(Part information located in Service Parts and Tools Group.)
553	797781	2	RETAINER, Valve
553A	797782	1	RETAINER, Valve
635	797685	1	BOOT, Spark Plug
718	-----		PIN, Locating -(Part information located in Cylinder Group.)
830	591088	2	STUD, Rocker Arm
868	797854	1	SEAL, Valve
914	797848	1	SCREW -(Rocker Cover)
1022	797846	1	GASKET, Rocker Cover
1023	799778	1	COVER, Rocker
1026	799966	2	ROD, Push
1029	591087	2	ARM, Rocker
1034	797787	1	GUIDE, Push Rod
1095	-----		GASKET SET, Valve -(Part information located in Service Parts and Tools Group.)
1472	-----		SEAL, O-Ring -(Part information located in Crankcase Cover/Sump and Lubrication Group.)



Flywheel, Ignition, and Starter Group

REF NO	PART NO	QTY	DESCRIPTION
23	797813	1	FLYWHEEL
55	799974	1	HOUSING, Rewind Starter
58	693389	1	ROPE, Starter -(Cut To Required Length)
60	691915	1	GRIP, Starter Rope
65	797654	3	SCREW -(Rewind Starter)
309	797775	1	MOTOR, Starter
332	797811	1	NUT -(Flywheel)
333	798616	1	ARMATURE, Magneto
334	797655	2	SCREW -(Magneto Armature)
337	-----		PLUG, Spark -(Part information located in Cylinder Head Group.)
363	-----		PULLER, Flywheel -(Part information located in Service Parts and Tools Group.)
455	797746	1	CUP, Flywheel
456	799973	1	PLATE, Pawl Friction
459	799976	2	PAWL, Ratchet
555	799532	2	SCREW -(Starter Solenoid)
597	799972	1	SCREW -(Pawl Friction Plate)
608	797747	1	STARTER, Rewind
635	-----		BOOT, Spark Plug -(Part information located in Cylinder Head Group.)
689	799669	1	SPRING, Friction
697	797776	2	SCREW -(Starter Motor) (Drive Cap)
729	797750	1	CLIP, Wire
899	799642	2	WASHER -(Starter Solenoid)
920	799481	1	SOLENOID, Starter
1005	797748	1	FAN, Flywheel
1210	799975	1	PULLEY/SPRING ASSEMBLY -(Pulley)
1211	799975	1	PULLEY/SPRING ASSEMBLY -(Spring)

Replacement Engine - US & Canada

REF NO	PART NO	QTY	DESCRIPTION
	25T2350111	1	Replacement Engine
	-----		Top No-Load Speed: 3750 -Trim: ALL
	-----		Service Note: For all Go-Karts use only a Model 136200 series engine as a replacement, regardless of the original Model.

Not For Reproduction

